



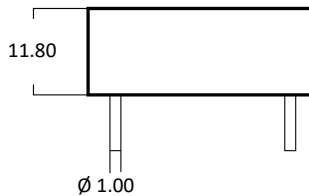
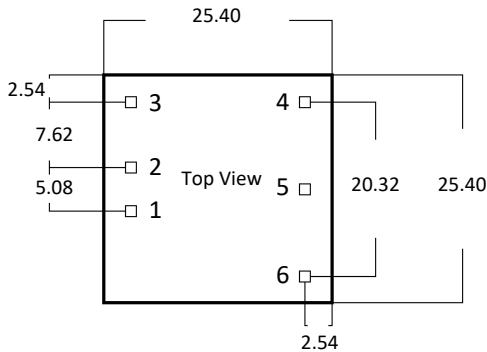
- 4:1 Voltage Input Range
- Both Metal Case and Plastic Case Available
- MTBF: 2.000.000 Calculated Hours
- Single or Dual Output
- Up to 3000V Isolation Available
- Excellent Shielding and Interference Function

Electrical Shortform Specifications

Electrical Specification	Input Voltage:	See Product Chart Page 2
	Output Voltage (Vout):	See Product Chart Page 2
	Switch Frequency:	170kHz to 300kHz
	Input Characteristic:	Built In - Output Filter
	Ripple:	Max. 120mVp-p
	Noise:	Max. 150mVp-p
	Efficiency:	Up to 85%
	Output Load Efficiency:	≤ ±1% (0% to 100% Load)
	TEMP. Coefficient:	≤ ±0.02% °C (Celsius)
	MTBF:	2.000.000 Hours
Protection (Auto Recovery)	Isolation I/O:	1500V / 0.5mA for 1min (Up to 3000V is Available)
	Short Circuit Protection:	Short Circuit (1sec)
	Over Load Protection:	Yes
	Over TEMP. Protection:	Yes
Certifications & EMC	Approvals:	CE / RoHS
	EMC	EN61000
Environmental	Operating TEMP.:	-40°C to +85°C
	Storage TEMP.:	-40°C to +125°C
	Cooling:	Natural Cooling
Dimension & Material	Case Material:	Metal or Plastic
	Case Size (L x W x H):	25.40 x 25.40 x 11.80mm
	Weight:	12g (±0.5)
	Soldering Temperature:	≤10sec 300°C Max.

Note - Non Load Operation for a Long time is Not Recommended
For Complete Datasheet/Specification and Drawing Please Contact Power Outlet

Drawing & Measurements: mm



URFDxxSxx - Single Output

Pin	Function
1	Vin
2	GND
3	CNT
4	OV
5	TRM
6	+Vout

URFDxxDxx - Dual Output

Pin	Function
1	Vin
2	GND
3	CNT
4	OV
5	TRM
6	+Vout

Product Chart

Model	Input Voltage (Vdc)	Output Voltage (Vout)	Load Current (mA)	Efficiency (%)	Ripple & Noise (mVp-p Max.)
URFD05S05 30W	5Vdc (4.5-18Vdc)	5	5000	84	120/150
URFD05S12 30W		12	2500	89	120/150
URFD05S15 30W		15	2000	89	120/150
URFD05S24 30W		24	1250	89	120/150
URFD12S05 30W	12Vdc (9-36Vdc)	5	5000	84	120/150
URFD12S12 30W		12	2500	89	120/150
URFD12S15 30W		15	2000	89	120/150
URFD12S24 30W		24	1250	89	120/150
URFD24S05 30W	24Vdc (18-72Vdc)	5	5000	84	120/150
URFD24S12 30W		12	2500	89	120/150
URFD24S15 30W		15	2000	89	120/150
URFD24S24 30W		24	1250	89	120/150
URFD05D05 30W	5Vdc (4.5-18Vdc)	±5	±2500	84	120/150
URFD05D12 30W		±12	±1250	89	120/150
URFD05D15 30W		±15	±1000	89	120/150
URFD05D24 30W		±24	±625	89	120/150
URFD12D05 30W	12Vdc (9-36Vdc)	±5	±2500	84	120/150
URFD12D12 30W		±12	±1250	89	120/150
URFD12D15 30W		±15	±1000	89	120/150
URFD12D24 30W		±24	±625	89	120/150
URFD24D05 30W	24Vdc (18-72Vdc)	±5	±2500	84	120/150
URFD24D12 30W		±12	±1250	89	120/150
URFD24D15 30W		±15	±1000	89	120/150
URFD24SD4 30W		±24	±625	89	120/150

* For 3000V Isolation add Suffix "H3", 4000V Isolation "H4", 6000V Isolation "H6" (URFDxxS(D)xxHx xxW)